

# ATS-2900 SERIES



Supports Maximum 48  
GE TX Ports and 6 10GE  
SFP+ Uplink Ports



Advanced Hardware  
Architecture and  
Industry-leading Port  
Density



Carrier-Level High  
Reliability  
Layer-3 Routing  
Functions



Varied Service  
Characteristics Versatile  
IPv6 Solution Complete  
Security Mechanism

## Product Overview

ATS-2900P L3-lite Series is a next-generation aggregation 10GE switch introduced (metropolitan area network), government and enterprise networks, Internet café and disk-less working environment. It is developed on the basis of high performance hardware and own independent intellectual property rights. It supports functions such as powerful ACL, flexible QinQ, 1:1 or N:1 VLAN switching, Ethernet OAM, carrier-level QoS and industry-level 10GE Ether-ring, ensuring this switch series meets application requirements in all kinds of complicated sites. It also supports layer-3 routing protocol.2900

## Product Characteristics

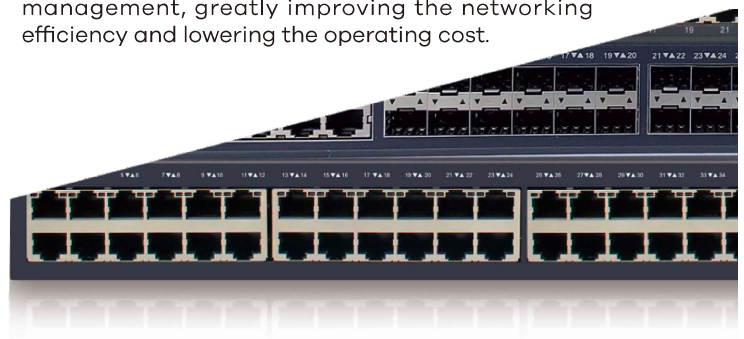
### Innovative Virtual Cluster Switching Technique

ATS-2900P L3-lite Series virtualizes multiple physical devices into one. The performance, reliability and management of the virtual system are superior to the physical ones.

**Improved Performance:** makes full use of each link in the physical devices, which avoids STP blocking the link and protects the original link to the maximum extent.

**High Reliability:** Based on the advanced distribution mechanism and efficient cross-physical link aggregation link function, the logic control plane, service control plane and service data plane are separated. Thus, ATS-2900P L3-lite Series can support continuous layer-3 routing forwarding, avoiding service interruption as a result of a single point of failure.

**Easy Management:** realizes single IP management, greatly improving the networking efficiency and lowering the operating cost.



ANANDA Telecom Pvt. Ltd.

Registered office : E-36, Amar Colony, Lajpat Nagar-IV, New Delhi - 110024, INDIA

Phone : +91 11 41323629, +91 93 5302 57173

E-mail : [Info@andatelecomindia.com](mailto:Info@andatelecomindia.com) URL : [www.andatelecomindia.com](http://www.andatelecomindia.com)

## Industrial Ethernet Ring with Zero Delay and Zero Packet Loss

Supports industry-level EAPS and their protection shift time is less than 50ms. Their high reliability is represented by the null packet loss, which has been proved by many years of application in the Grid, rail transportation and defense systems.

## Telecom-Level Ethernet Switch

Supports the telecom-level Ethernet-ring protection protocol with a protection shift time of less than 50ms, STP/RSTP/MSTP, backup of active and standby uplinks and LACP link aggregation to cater to the requirements of high reliability of carriers.

Support Ethernet standard 802.3u, 802.3x, 802.3ad, 802.1d, 802.1p, 802.1q, 802.1w, 802.1ad.

Support system status LED, port dynamic IED

Provides the perfect Ethernet OAM mechanism to monitor the network running status in real time for rapid trouble locating and detection.

Supports powerful ACL functions to access and control L2-L7 data based on physical port, VLAN, MAC, IP and protocol port ID, and providing carriers flexible and various policy control methods.

Supports In-Service Software Upgrade (ISSU) to ensure the unremitting data forwarding during system upgrade.

Supports various L2 multicast functions, including IGMP-Snooping, fast-leave and trans-vlan

## Flexible and Convenient Management and Maintenance

Supports management modes such as the console port, Telnet, SSH, etc.

Supports the WEB management mode, which is easy and efficient so that it makes installation and debugging convenient.

Supports TFTP-patterned file upload/download management.

Supports ISSU (In-Service Software Upgrade).

Supports SNMP NMS smart network management platform to realize automatic equipment discovery, network topology management, equipment configuration management, performance data statistics and analysis and trouble management

## Carrier-Level QoS Policies

Supports priority retagging and complicated flow classification based on VLAN, MAC, source address, destination address, IP or priority to better streamline carrier's services.

Supports provides flexible bandwidth control policies and supports port-/flow-based flow limit, and ensuring the line speed forwarding of each port to make sure the high quality of video, audio and data services.

Supports 8 priority queues by each port.

Supports multiple queue schedule algorithms such as SP, WRR, or "P plus WRR"

## Versatile IPv6 Solutions

Supports the IPv6 protocol suite, IPv6 neighbor discovery, ICMPv6, path MTU discovery, etc.

Supports Ping, Traceroute, Telnet, SSH, ACL and so like on the basis of IPv6, meeting IPv6 networks' equipment management requirements and service control requirements.

## Perfect Security Mechanisms

Equipment-level security: The advanced hardware infrastructure design realizes the level-based packet schedule and packet protection, prevents DoS-/TCP-related SYN flood, UDP flood, broadcast storm or large traffic attacks, and supports level-based command line protection, endowing different levels of users with different management permissions.

Supports perfect security authentication mechanisms: IEEE 802.1x, Radius and Tacacs+. Supports storm/multicast/unicast limit to ensure the normal running of equipment in harsh network conditions.

Supports a perfect ring detection mechanism to ensure the long-term stable running of network. Supports port isolation within the same VLAN, DHCP-Snooping, and IP plus MAC plus Port binding for ensuring user data security;

## Intelligent PoE+

ATS-2900-24P4X and SATS-2900-48P6X support IEEE 802.3af/at PoE standard, and power mapping scales up to a maximum of 740W of PoE+ power; ATS-2900-24P4X and ATS-2900-48P6X support PoE non-stop power supply. The PoE+ power is maintained during a switch reload. ATS-2900-24P4X and ATS-2900-48P6X support manual and dynamic PoE power allocation; ATS-2900-24P4X and ATS-2900-48P6X support up to 6KV thunder-proof of the PoE port and power supply.

# Product Specifications

Turning Copper into Gold

Item	ATS-2900-24P4X	
Interface	24 GE POE 4 10GE/GE SFP+	
Console(RJ45)	1	
Backplane(Gbps)	128	
Forwarding rate (Mpps with 64 bytes)	96	
Chassis	Dimensions (WxDxH)(mm)	440x210x44
	Weight(KG)(empty)	3
Package	Dimensions (WxDxH)(mm)	555x295x88
	Weight(KG)	4.1
Power consumption	no-load	< 25W
	full-load	<408W
Power supply	AC: 100-240V	410W
	DC: 36-72V	
POE power budget	370W	
Total output BTU (1000BTU/H=293W)	1392.49	
Fan number	2	
Noise@25°C(dBA)	37.5	
MTBF(H)	> 200,000	
Forwarding mode	Store-forward	
Flash (MB)	16	
DRAM (MB)	256	
MAC	16K	
Buffer size(MB)	1.5	
Interface vlan	64	
Routing table	2040	
Jumbo frame	9K	

**ANDA Telecom Pvt. Ltd.**

Registered office: E-36, Amar Colony, Lajpat Nagar-IV, New Delhi - 110024, INDIA

Phone: +91 11 41323629, +91 95 302 57173

E-mail : [Info@andatelecomindia.com](mailto:Info@andatelecomindia.com)

URL : [www.andatelecomindia.com](http://www.andatelecomindia.com)

## Features

### VLAN

- 4K Active VLAN, QinQ & Selective QinQ, GVRP, Private VLAN, Voice-VLAN

### Spanning Tree

- 802.1D (STP), 802.1W (RSTP) and 802.1S (MSTP)
- BPDU guard, root guard and loopback guard

### Multicast

- IGMP v1/v2/v3, IGMP Snooping, IGMP Fast Leave, MVR, IGMP filter

### IP

- Static route, RIP, OSPF
- IPv4/v6 dual stack

### IPv6

- ICMPv6, DHCPv6, ACLv6 and Ipv6 Telnet
- IPv6 neighbor discovery, Path MTU discovery
- MLD V1, MLD snooping
- IPv6 Static Routing, RIPng, OSPFv3
- Manual tunnel, ISATAP tunnel, 6 to 4 tunnel

### Certification

- CE, FCC, ROHS

### QoS

- CAR, HQoS, MAC/IP/TCP/UDP/ VLAN/ COS/ DSCP/ TOS based QoS, 802.1P/ DSCP priority re-labeling, SP, WRR, and "SP+WRR", Tail-Drop, WRED, flow monitoring and traffic shaping

### Security

- Port isolation, Port security, and "IP+MAC+port" binding, MAC sticky, DAI & IP source guard, PPPoE+,
- IEEE 802.1x, AAA, Radius and BDTacacs+
- L2/L3/L4 ACL flow identification and filtration Anti-attack from DDoS, TCP's SYN Flood, UDP Flood, etc. Broadcast/multicast/unknown unicast storm-control
- MD5, SHA-256, RSA-1024, AES256, etc.

### DHCP

- DHCP server/relay/client
- DHCP snooping/option82

### Reliability

- Static/LACP link aggregation, Interface backup
- EAPS and ERPS
- ISSU uninterrupted system upgrade
- BVSS, up to 16-units per stack
- VRRP
- UDLD

### Management

- Console, Telnet, SSH v1/2, HTTP, HTTPS, SNMP v1/v2/v3, RMON
- TFTP, FTP, SFTP
- NTP
- ZTP

- SPAN, RSPAN
- Dying gasp\*

### Environment

- Operating temperature/humidity: 0°C -50°C , 10%-90% non-condensing
- Storage temperature/humidity: -20°C -70°C , 5%-95% non-condensing

### Accessories

- Power cord, rackmount kits, console cable

### ANDA Telecom Pvt. Ltd.

Registered office: E-36, Amar Colony, Lajpat Nagar-IV, New Delhi - 110024, INDIA

Phone: +91 11 41323629, +91 95 302 57173

E-mail : [Info@andatelecomindia.com](mailto:Info@andatelecomindia.com)

URL : [www.andatelecomindia.com](http://www.andatelecomindia.com)

## Ordering Information

Item	Description
<b>ATS-2900 L3-lite series switch</b>	
<b>ATS-2900-24T4X</b>	Ethernet Layer-3 liteswitch with 24 GE and 4 10GE ports (1 Console port, 24 GE TX ports, 4 10GE/GE SFP+ ports; 100 to 240 VAC input, 60 HZ , fanless, 1U, standard 19-inch rack-mounted installation)
<b>ATS-2900-24S8C4X</b>	Ethernet Layer-3 lite switch with 24 GE and 4 10GE ports (1 Console port, 16 100M/1000M SFP ports, 8 GE SFP/TX combo ports, 4 10GE/GE SFP+ ports; 100 to 240 VAC input, 60 HZ, the cooling fan, 1U, standard 19 inch rack-mounted installation)
<b>ATS-2900-24P4X</b>	Ethernet Layer-3 lite POE switch with 24 GE ports and 4 10GE ports (1 console port, 24 GE POE TX ports, 4 10GE/GE SFP ports; standard AC220V power supply, 370W POE power, the cooling fan; 1U; standard 19-inch rack-mounted installation)
<b>ATS-2900-48T6X</b>	Ethernet Layer-3 lite switch with 48 GE and 6 10GE/GE SFP+ ports (1 Console port, 48 GE TX ports, 6 10GE/GE SFP+ ports; 100 to 240 VAC input, 60 HZ, the cooling fan, 1U, standard 19 inch rack-mounted installation)
<b>ATS-2900-48P6X</b>	Ethernet Layer-3 lite POE switch with 48 GE ports and 6 10GE/GE ports (1 console port, 48 GE POE TX ports, 6 10GE/GE SFP+ ports; standard AC220V power supply, 370W AC POE power, 740W DC POE power, the cooling fan; 1U; standard 19-inch rack-mounted installation)

### ANDA Telecom Pvt. Ltd.

Registered office : E-36, Amar Colony, Lajpat Nagar-IV, New Delhi - 110024, INDIA

Phone : +91 11 41323629, +91 93 5302 57173

E-mail : [Info@andatelecomindia.com](mailto:Info@andatelecomindia.com) URL : [www.andatelecomindia.com](http://www.andatelecomindia.com)