

Product details

AT-MODS_E1 E1 optical is called single E1 PDH. It offers 1xE1 +1*Ethernet over fiber.

Features:

AT-MODS_E1 E1 is called single of E1 PDH , which can connect the data one port E1 or one port RS232 to the optical interface .
the equipment is widely used in the mobile phone net station. and FTTH .

Technology Characteristics

Realized one E1 PDH Multiplexer with 1 Ethernet transmitting over fiber in transparent mode
Allow the equipment to interoperate over V.35 fiber and ethernet fiber
Relaize one RS232 data transmitting in optical fiber line with 4800bps rate
Have a loop setting function and easy to open and test
Enable to manage networks and supervise equipment running and settings
Provide unbalanced 75Ω and balanced 120Ω E1 interfaces



Interface Parameters

E1 Interface:

- Support ITU-T G.703、 G.704
- HDB3 line coding, comply indication output of route warn
- Coding rate : 2048Kbps±50ppm
- 75Ω physics interface use BNC standard coaxial connector, 120Ω physics interface use RJ45 connector

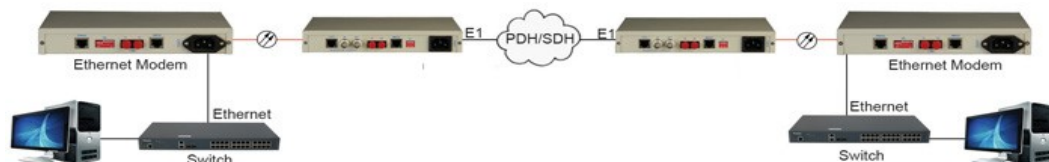
Ethernet Interface

- ETH interface (10/100M UTP)
- Bit rate: 10/100 Mbps half/full duplex adaptive
- Standard: Compatible with IEEE802.3, IEEE802.1Q (VLAN)
- Connector: RJ45

Optical Interface: (PDH)

- Rate : 4.096Mbps±50ppm
- Wavelength : 1310nm
- Power of optical signal output: -2~-11dBm
- Receipt sensitivity : better than -36dBm
- Interface : FC

Application Diagram



ANDA Telecom Pvt. Ltd.

ISO 9001:2000 Certified Company

Registered office : E-36, Amar Colony, Lajpat Nagar-IV, New Delhi - 110024, INDIA

Phone : +91 11 41323629, +91 93 502 57173

E-mail : Info@andatelecomindia.com

URL : www.andatelecomindia.com