

## E1 TO 4\*Ethernet Protocol Converter

### Overview

ATMEL-400FB is a high performance and self-learning long distance Ethernet bridge that could point-to-point transfer data from E1 channels to 4\* Rj-45 interfaces. It is compact in size and low in cost and suitable to cost effective bridging application. It could be used as an extension or divider to LANs with bit rate base structure. This equipment could continuously learn the MAC



addresses among the connected LANs and decide to transmit or filter. It has a table containing up to 10,000 addresses and it could be automatically updated. The filtering and transmitting rate is up to 20,000 frames, and the buffer could contain 256 frames, the transfer delay is 1 frame. When used as a LAN extension or divider, it works under the modes either filtering or filtering prohibited. China has an extensive resource in E1 channels and so this product is widely used in network connection.

### Features

- ◆ high quality Ethernet bridge/extension
- ◆ Fully compatible with IEEE 802.3/802.3u, Ethernet v.2
- ◆ Rate of percolation and transmission: 30,000 frame per second
- ◆ Buffer: 256 frame
- ◆ 10,000 MAC address LAN table, and automatic LAN table learning and aging
- ◆ Supply WAN line interface of the E1 and ITU-T G.703/704 standard
- ◆ Transmission protocol of E1: HDLC
- ◆ WAN line data rate: 2.048M
- ◆ Line code: HDB3
- ◆ Timing mode is selectable: Internal oscillator (default), Line clock derived from the receive signal
- ◆ Internal power supply
- ◆ RJ-45 connector: MDI/MDI-X auto-sensing
- ◆ Type: standalone

ANDA Telecom Pvt. Ltd.

Registered office : E-36, Amar Colony, Lajpat Nagar- IV, New Delhi – 110024, INDIA

Phone : +91 11 41323629, +91 93 502 57173

E-mail : [Info@andatelecomindia.com](mailto:Info@andatelecomindia.com)

URL : [www.andatelecomindia.com](http://www.andatelecomindia.com)

## Specifications

### 1、 E1 Port

Jitter: comply with G.742 and G. 823 standard

Data rate: 64Kbps\*N N=(1~31)

Electric characteristic: comply with ITU-T G.703/704 standard

Line code: HDB3

Frame format: frame

Interface impedance: 75Ω(BNC)/120Ω(BALANCE)Connector: BNC(75Ω)/RJ45 (120Ω)

### 2. Ethernet port

Data rate: 10/100Mbps

Connector: RJ-45

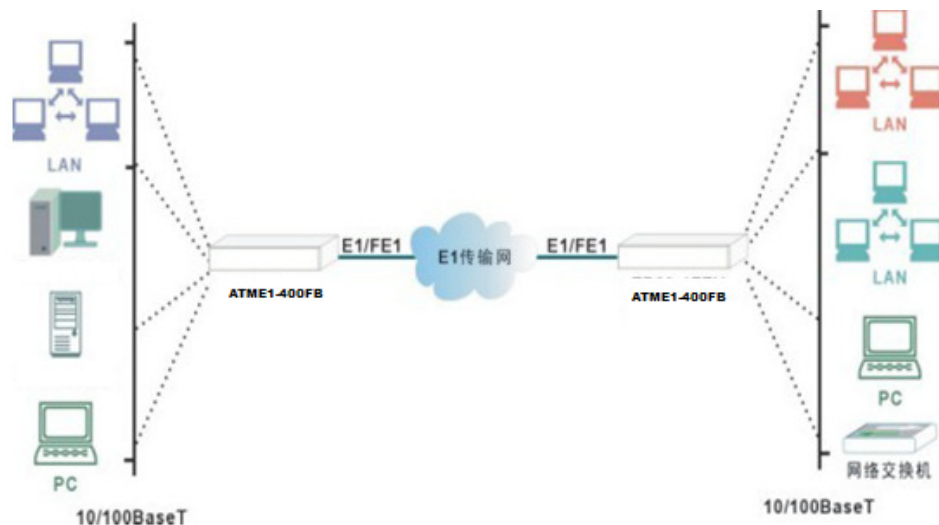
4\*Ethernet Ports

Supporting VLAN.,Complied to 802.1Q

Electric characteristic: comply with IEEE 802.3 standard

3、 Size: 212mm(W)×150mm(L)×38mm(H)

## Typical Application



## Order Information

ATMEL-400FB/AC	FE1-4*10/100 BASE-T bridge,N*64K,75Ω,120Ω,220V
ATMEL-400FB/DC	FE1-4*10/100BASE-T bridge,N*64K,75Ω,120Ω,-48V

ANDA Telecom Pvt. Ltd.

Registered office : E-36, Amar Colony, Lajpat Nagar- IV, New Delhi – 110024, INDIA

Phone : +91 11 41323629, +91 93 502 57173

E-mail : [Info@andatelecomindia.com](mailto:Info@andatelecomindia.com)

URL : [www.andatelecomindia.com](http://www.andatelecomindia.com)