

AT-NP302

NP302 Industrial-rail 2 channels serial server



PRODUCT OVERVIEW: - AT-NP302 The industrial-rail serial server is IP40 protection level, it is a serial network server that enables serial devices to have networking capabilities immediately, and can centrally manage scattered serial devices, hosts, etc. through the network. The product supports 1-2 RS-232/RS-422/RS-485 to 1 100M Ethernet Comb port (providing 1 100M electrical port or 1 100M optical port), and can adopt 35mm railed and wall-mounted installation methods which can meet the needs of different application sites.

The serial server supports a variety of network protocols, such as TCP, UDP, ARP, ICMP, HTTP, DNS, DHCP, and SNMP; it has complete management functions, supports access control, rapid configuration, online upgrades, etc.; each serial

port supports 4 TCP Or UDP session connection, support **Modbus TCP**, TCP Server, TCP Client, UDP Server, UDP Client, etc. multiple working modes; support WEB access mode. In addition, the provided management configuration tool based on the Windows platform can guide users step by step to manage and configure the device, and realize the immediate networking of serial devices through simple settings. The network management system has a friendly interface design, simple and convenient operation, and can bring you a good user experience.

The hardware adopts fan less, low power consumption, wide temperature and wide pressure design, and has passed strict tests in compliance with industry standards. It can adapt to industrial field environments with strict requirements for EMC. It can be widely used in PLC control and management, building automation, and medical and health care automation. System, measuring instrument and environmental power monitoring system, etc. Can be used many embedded network control applications:

- Industrial automation production
- Security access control: network access control, alarm equipment, infrared detection alarm, remote card reader
- Smart home equipment: smart home gateway, smart socket, smart switch
- Network IO controller: industrial remote IO input, remote relay control
- Building intelligence and energy monitoring
- Medical monitoring equipment

Anda Telecom Pvt. Ltd.

Registered office : E-38, Sec 06, Noida, Gautambudha Nagar, Uttar Pradesh - 201301, INDIA

Phone : +91 120 4109590, +91 98716 50366

E-mail : Info@andatelecom.com

URL : www.andatelecom.com

FEATURES: -

- Adopt ARM Cortex-M4, main frequency 192MHz processor;
- Support 1 channel of FE Comb (provide 1 channel of FE electric port or 1 channel of FE SFP optical port), support SFP optical module DDM management;
- Ethernet support 10/100Base-T(X) adaptive Ethernet interface; support Auto-Nego Full or half duplex), support automatically detect MDI/MDIX
- The serial port supports 300bps-921600bps line speed non-blocking communication, supports automatic scanning and matching of baud rate, and supports customer-defined baud rate ;
- The serial data interface complies with the relevant standards of RS-232/RS-485/RS-485. There are three kinds of interfaces, and different bus modes can be set by dialing codes;
- Support various working mode like Modbus TCP, TCP Server, TCP Client, UDP Server, UDP Client, etc.;
- Complete the transparent conversion from Modbus-RTU to Modbus-TCP, and realize the reading of serial device data through the network.
- Support the monitoring of serial port state and serial port parameter, which can show the state of communication;
- Support cross-gateway and cross-route communication; support virtual serial port drive access mode and automatic connection recovery function after network interruption;
- Flexible serial data framing settings to meet various subcontracting needs of users;
- Support standard TCP/IP SOCKET application program access, TCP supports multiple connections, meeting the requirement of simultaneous monitoring or management of serial devices within 4 users;
- Support single or multi-machine communication under UDP mode to meet multiple users' simultaneous monitoring or management of serial devices;
- Support Windows configuration tools, serial port and WEB and other configuration forms, support SNMP network management;
- Support local and remote system firmware update;
- Support wide range 9-55V DC and AC power input;
- Support internal isolation, redundant dual power input;
- The power support overload protection and anti-reverse connection protection;
- Meet the requirements of industrial 4 grade electromagnetic compatibility;
- Super anti-radar function: anti lightning, anti-inductive high voltage, anti-surge, etc.;
- Highly efficient heat dissipation without fan, reducing repairing time;
- Anode oxidation aluminum alloy shell, IP40 protection grade, which can withstand the test of harsh environments;
- Railed or wall-mounted installation;
- Wide-temperature type: operating temperature -40°C~+85°C;
- All models have passed the 100% baking machine test.

Anda Telecom Pvt. Ltd.

Registered office : E-38, Sec 06, Noida, Gautambudha Nagar, Uttar Pradesh - 201301, INDIA

Phone : +91 120 4109590, +91 98716 50366

E-mail : Info@andatelecom.com

URL : www.andatelecom.com

PARAMETERS:-

10/100M Ethernet interface

Protocol	comply with IEEE 802.3ab, IEEE 802.3z
Rate	10/100M adaptive, full duplex/half duplex adaptive
MAC Address Table	4096 MAC addresses
Physical interface	Rj45, Support Auto-MDIX

Serial Interface:

RS-422	TXD + TXD-RXD + RXD-GND
RS-485 4 wires	TXD + TXD-RXD + RXD-GND
RS-485 2 wires	A(corresponding TX+) B(corresponding TX-) GND
RS-232	RXD TXD GND

Serial interface

Standard G.742 and G.823

EIA/TIA-232 RS-232 (ITU-T V.28)

EIA/TIA-422 RS-422 (ITU-T V.11)

EIA/TIA-485 RS-485 (ISO/IEC8284)

Environmental indicators

Operating temperature	-40 °C - +80 °C
Storage temperature	-40 °C - +85 °C
Humidity	0% -95% (non-condensing)
MTBF	:> 100,000 hours

SPECIFICATIONS:-

Product model	AT-NP302
Product Function Description	Transmitting 2 channels of RS232/422/485 serial data on Ethernet, industrial railed

Anda Telecom Pvt. Ltd.

Registered office : E-38, Sec 06, Noida, Gautambudha Nagar, Uttar Pradesh - 201301, INDIA

Phone : +91 120 4109590, +91 98716 50366

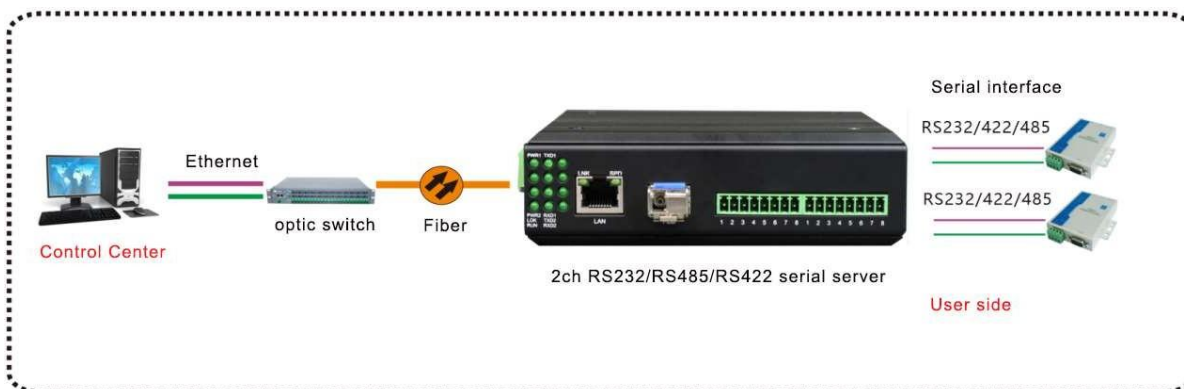
E-mail : Info@andatelecom.com

URL : www.andatelecom.com

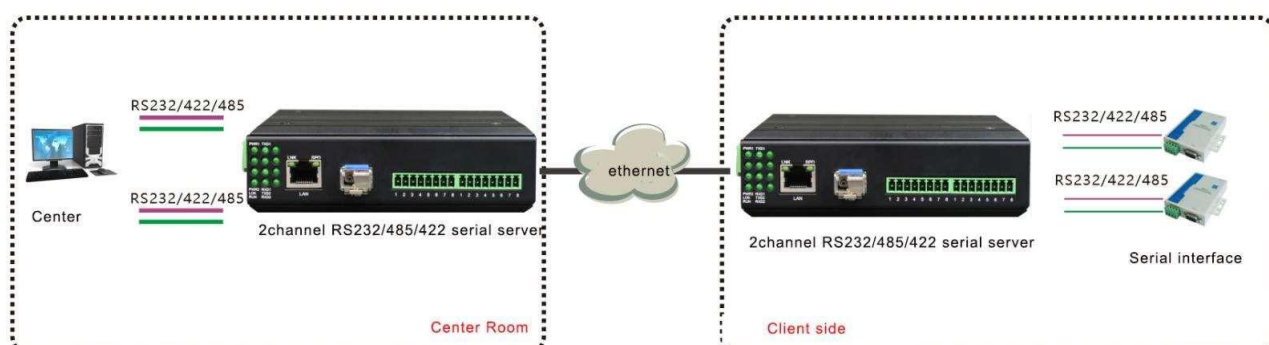
Service port description	2 RS232/422/485 serial interfaces; 1 channel of FE electric port/ 1 channel FE optical port
power supply	Redundant dual power input DC9-55V or AC 7-43V, power consumption is less than 5W
Product Size	Shell: IP40 protection grade, aluminum alloy material Size: 133mm(length) x 130mm(width)x 40mm(height) Installing method: railed installation, wall-mounted installation
weight	0.65Kg / PCS

APPLICATION:-

Case 1 : single applying



Case 2 : paired applying



ORDERING INFORMATION: -

Anda Telecom Pvt. Ltd. Registered Office: PLOT NO 38, BLOCK E, -, Sector 6, Noida, Gautambuddha Nagar, Uttar Pradesh, 201301 India.	  	<u>https://andatelecom.com/</u> +91 120 4109590, +91 9871650366 <u>info@andatelecom.com</u>
--	---	---