

Description

ATE3-T3EL is state of the art Network Termination Units (NTU) connecting Fast Ethernet LANs over E3 or T3/DS3 circuits. The devices enable service providers and ISPs to supply transparent Ethernet services to remote locations over existing E3/T3/DS3 infrastructure.

Specifications

E3 interface

Comply with ITU G.703
 Rate:34.368 Mbps
 Code type:HDB3
 Impedance:75ohm unbalanced 1
 Physical connector:BNC coaxial for unbalanced

T3/DS3 interface

Comply with GR-499-CORE; ANSI T1.107; ANSI T1.102
 Rate:44.736 Mbps
 Code type:B3ZS
 Impedance:75ohm unbalanced 1
 Physical connector:BNC coaxial for unbalanced

Power supply

AC power:220V±10%,50Hz
 DC power:-48V(optional)
 Power:5W



Features

- *Best price performance Ethernet over E3 or T3/DS3 intelligent converter in the market
- *Wire-speed forwarding fully utilizing the E3 or T3/DS3 circuit
- *VLAN stacking and tagging enabling service providers to provide layer 2 transparent LAN services while securing providers management
- *Fault propagation of E3 or T3/DS3 error conditions to Ethernet port
- *Diagnostic collection on TDM and Ethernet interfaces
- *Comprehensive LED indicators on front panel, convenient for the diagnosis of equipment working state
- *-48V DC & 220V AC power supply optional

ANDA Telecom Pvt. Ltd.

ISO 9001:2000 Certified Company

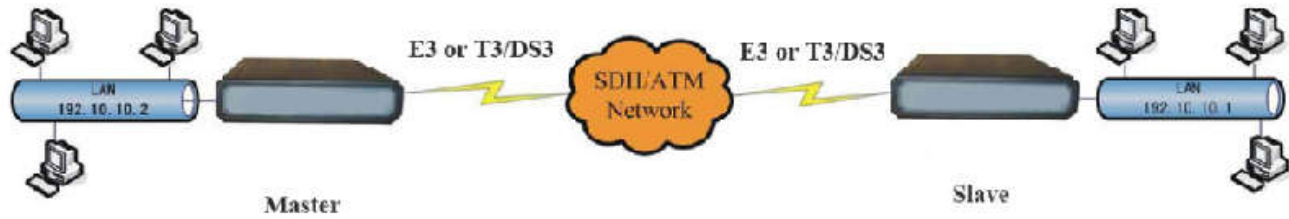
Registered office : E-36, Amar Colony, Lajpat Nagar-IV, New Delhi - 110024, INDIA

Phone : +91 11 41323629, +91 93 502 57173

E-mail : Info@andatelecomindia.com

URL : www.andatelecomindia.com

Typical Application



ANDA Telecom Pvt. Ltd.

ISO 9001:2000 Certified Company

Registered office : E-36, Amar Colony, Lajpat Nagar-IV, New Delhi - 110024, INDIA

Phone : +91 11 41323629, +91 93 502 57173

E-mail : Info@andatelecomindia.com

URL : www.andatelecomindia.com